

**iVEGA**

WOOD





## PORTMAN Sliding door gear

Manufactured in grade 304 stainless steel, IVEGA from Portman is a new range of designer sliding door gear. A simple and elegant aesthetic as well as precision manufacture, result in a high quality look, feel and tactile experience.

Roller wheels used with shielded ball-bearings allow the door leaf to glide effortlessly along the track. A concealed floor mounted guide is centrally located to eliminate any swinging effect and allow a uniform movement during sliding.

Components can be supplied finished in either satin brushed or mirror polished finishes, when ordering please add SS (for satin) or PS (polished) suffixes to the part numbers on the following pages.

## GLASS



# PORTMAN Sliding door gear

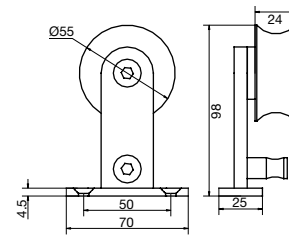
## WOOD: **IVEGA** timber door leaves



### Door Hangers

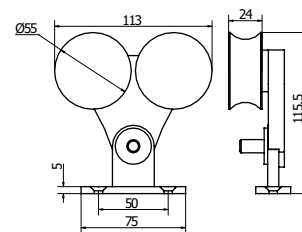
#### P7910

Single wheel hanger 150kg c/w stainless steel anti jump pin.  
Grade 304 stainless steel, shielded ball race bearing.



#### P7911

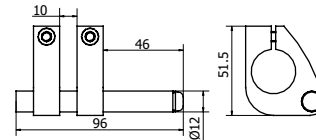
Double wheel hanger 300kg c/w stainless steel anti jump pin.  
Grade 304 stainless steel, shielded ball race bearings.



### Door Stops/Guides

#### P7921

Double clamped rail mounted end stop to suit timber door hangers.



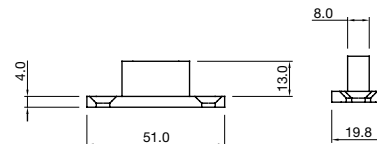
#### P7923

Rail up-stand stop complete with concealed grub screw rail fixing.



#### P7930

T-shaped floor mounted guide. Grade 304 stainless steel.

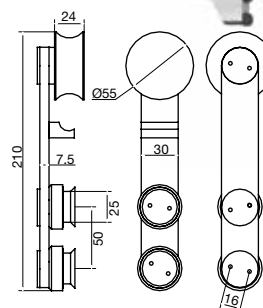


# GLASS: **IVEGA** door leaves

### Door Hangers

#### P7912

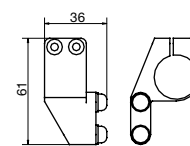
Single wheel glass door hanger 150kg c/w acrylic anti-jump pin. Grade 304 stainless steel, shielded ball-race bearing.



### Door Stops/Guides

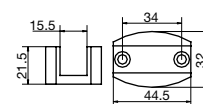
#### P7922

Rail mounted end stop.



#### P7931

Adjustable U-shaped floor mounted guide for glass 8–12mm.



# TRACKS and accessories

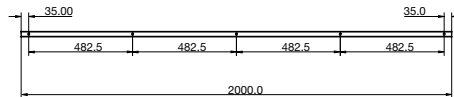


## Tracks

iVEGA tracks are available in 2, 3 and 4 metre lengths as standard, pre-drilled on one side only, for concealed side mounted fixing. Standard drilling/fixing positions are illustrated below. For non-standard track lengths and drilling placements please contact the sales office.

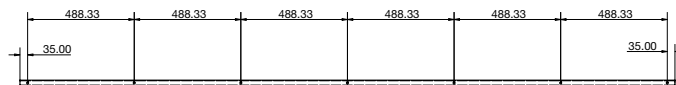
### P7902 (2m)

2000mm Track, 25.4mm dia. x 2.5mm stainless steel, complete with 5no M8 fixing holes.



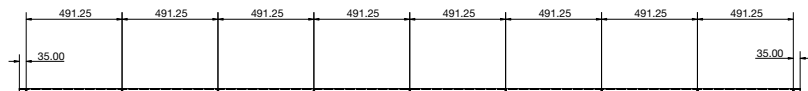
### P7903 (3m)

3000mm Track, 25.4mm dia. x 2.5mm stainless steel, complete with 7no M8 fixing holes.



### P7904 (4m)

4000mm Track, 25.4mm dia. x 2.5mm stainless steel, complete with 9no M8 fixing holes.



## Track accessories

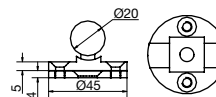
### P7920

25.4mm track end plug.



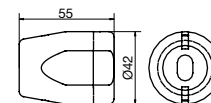
### P7940

Block/brickwork track mount inclusive of internal rail block and fixing sub-plate.



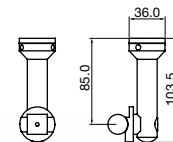
### P7942

Track end fixing suitable for 25.4mm dia track.



### P7946

Ceiling mounting bracket.



### P7999

Adjustable pig-nose fixing tool (required for glass door clamps only).



### Example specification (timber leaf, brushed stainless)

#### Track assembly

- P7902 SS:** 1no 2000mm Rail. 25mm dia. x 2mm thick stainless steel, complete with 5 no M8 fixing holes
- P7920 SS:** 2no 25mm diameter rail end cap
- P7940 SS:** 5no Standard blockwork/plasterboard wall fixing. Complete with internal rail block and sub-plate

#### Hangers

- P7910 SS:** 2no Single wheel, wooden door hanger, 150kg, complete with stainless anti-jump guide

#### Stops & Guides

- P7921 SS:** 2no Double clamp projection rail-end stops to suit timber door hangers
- P7930 SS:** 1no T-shaped timber door bottom guide

# PORTMAN

## **Portman Pocket Door Systems Sales Office and showroom**

Bilton Road  
Cadwell Lane  
Hitchin

SG4 0SB

Tel: 01462 444466

Fax: 01462 444433

e-mail: [sales@portman-pocketdoors.co.uk](mailto:sales@portman-pocketdoors.co.uk)

[www.portman-pocketdoors.co.uk](http://www.portman-pocketdoors.co.uk)

Due to the progressive development, Portman  
Pocket Door Systems reserve the right to modify  
specifications and descriptions without prior notice.

